



AirWATCH

Powered by AirLogic™

Stantec.io

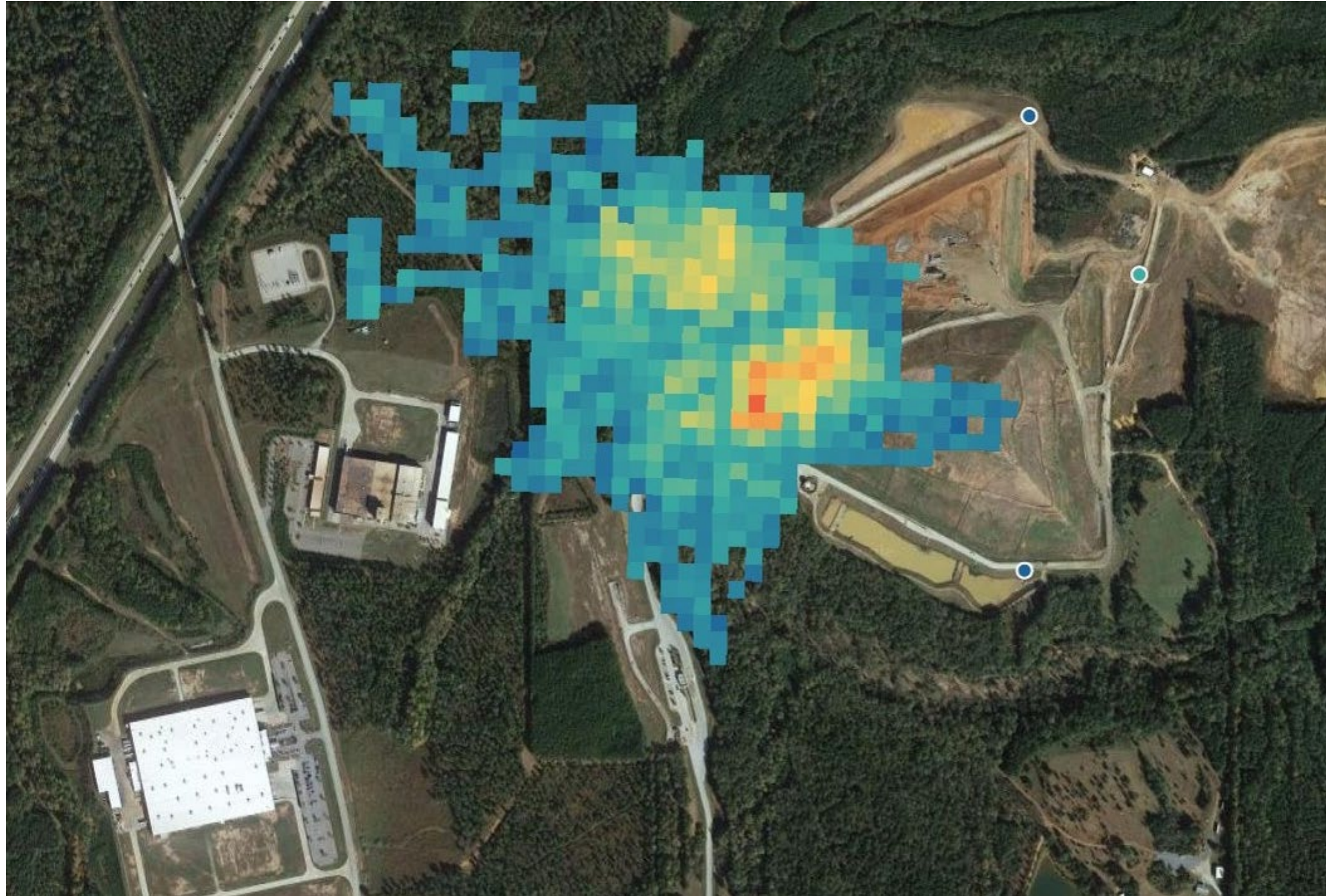
ARE EMISSIONS COSTING YOUR OPERATIONS? MAKE BETTER DECISIONS FASTER, USING REAL-TIME EMISSIONS DATA WITH AirWATCH.

Powered by AirLogic™, AirWATCH uses an intuitive visual interface that is easy to navigate and understand sensor data from multiple sources for visualization, modelling, and analysis. It delivers a comprehensive view of sensor and measurement data specific to a site or location and creates a single source dashboard with hourly, daily, weekly, quarterly, and yearly views of emissions and concentrations for targeted facilities that support short and long-term monitoring and mitigation efforts, including establishing operational efficiencies.

The portal consolidates customer-specific curated data, including ground sensors, regional sensors, and satellite sensor data in one place. Custom alerts swiftly notified of unusual, emerging conditions around facilities, allowing for quicker response time to these conditions. Map-based and graphical data visualization solutions include roll-up reporting tailored to each company on individual and unique timescales.



Olinda Landfill
gas to energy plant
Olinda, California, US



AirWATCH displays imagery that detects the flow and intensity of airborne pollutants.

Our waste management client used AirWATCH to identify and manage their GHG emission risk. The platform consolidated different types of emission monitoring data from multiple landfills. Typically, the data (surface emission monitoring, drone surveys, aircraft surveys, fixed sensor data) is collected in different ways and via different formats. AirWATCH allowed our client to centralize multiple types of data into a single platform. This allowed them to compare landfill sites to each other, and look at the data as a trend in time to understand how each site was doing and where they were headed.

EFFECTIVE EMISSION MANAGEMENT BENEFITS

AirWATCH is the most responsive, innovative, technology-driven service desktop program that will measure, monitor, manage and mitigate emissions.

Measure

A great place for any company to start is identifying baseline data—taking the current pulse on company emissions. Critically important, this work pinpoints areas of concern, cost-saving opportunities, and a myriad of data sources needed to align with regulatory requirements.

Monitor

With any emissions program, data monitoring needs to become a key operational business component. Hourly/daily/weekly/quarterly/yearly monitoring identifies changes or unusual activity, allows for faster decision making, shows progress on reduction programs, and reports against baseline data.

Manage

By monitoring emission data frequently, operations can prioritize, developing short and long-term planning strategies and solutions to manage—creating operational efficiencies, and reducing associated costs and risk.

Mitigate

Often to meet regulatory and ESG related requirements, there is a need to mitigate current emission levels. In measuring, monitoring, and managing this data, operations can develop solid plans to implement operational changes, including swapping out equipment, scaling programs across multiple sites/operations, or changing internal practices. These actions contribute to a cleaner atmosphere, can address regulatory requirements, and create cost savings.



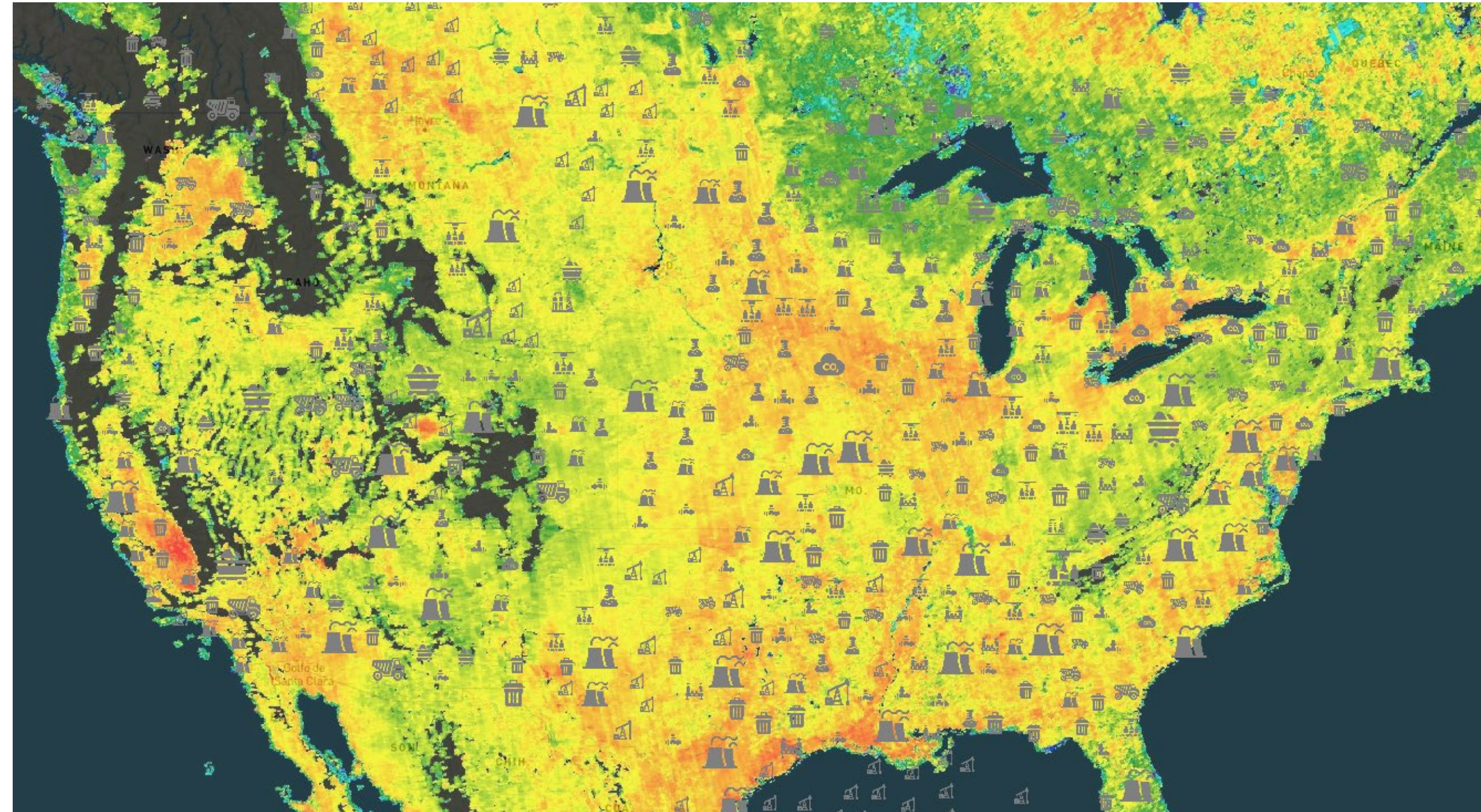
AirWATCH can track airborne dust from mining operations.

INDUSTRIES AirWATCH SUPPORTS

- Agriculture
- Manufacturing
- Mining
- Oil & Gas
- Power
- Waste Management



AirWATCH monitors airborne emission levels from manufacturing facilities.



AirWATCH is powered by AirLogic™ that uses an intuitive visual interface is easy to navigate and understand sensor data from multiple sources for visualization, modelling and analysis. Imagery Courtesy: GHGSat 2021

What is AirLogic™?

Delivering a comprehensive view of sensor and measurement data specific to a site or location, AirLogic™ creates a single-source dashboard with hourly, daily, weekly, quarterly, and yearly views of emissions and concentrations for targeted facilities. This supports short and long-term monitoring and mitigation efforts, including establishing operational efficiencies. Accessed from your desktop and at a fraction of the cost; the AirLogic™ portal consolidates customer-specific curated data, including ground sensors, regional sensors, and satellite sensor data in one place.

Using the Rosetta Dashboard, clients can easily integrate and visualize measurements from multiple sensors in one place, customizing their information based on what is most critical and relevant to them. Custom alerts swiftly notified of unusual, emerging conditions around facilities, allowing for quicker response time to these conditions. Map-based and graphical data visualization solutions include roll-up reporting tailored to each company on individual and unique timescales. Findings and strategies from key sites can also provide a foundation for use at additional locations.



proudly
partnered with



WE CAN HELP YOU

AirWATCH is an integral part of monitoring and mitigating your emissions program.

Fully aware: track air pollutants and GHG's with near real-time data

CONTACT US

Email us at remotesensing@stantec.com to learn more about AirWATCH

Our AirWATCH experts:

Kevin Madry
Stantec, Senior Principal

Reid Person
Stantec, Principal

Grant Wiseman
Stantec, Remote Sensing Technology

CONNECT WITH US



STANTEC.COM